



CURRICULUM VITAE

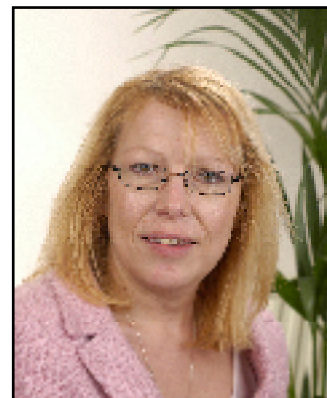
Name: Mrs Lesley Jones

Based In: Milton Keynes

Company Address: Rehab Without Walls
27 Presley Way
Crownhill
Milton Keynes
MK8 0ES

Telephone No: 01908 560041

Email: lesley.jones@rehabwithoutwalls.co.uk



PROFESSIONAL QUALIFICATIONS

BSc Hons Psychology	(Open University)	1995
Certificate of Qualification in Social Work		1999

PROFESSIONAL EMPLOYMENT

Present Employment

- Rehab Without Walls*
Case Manager *February 2003 - present*
To provide case management input for adults and children with acquired brain injury, or spinal injury and who have complex rehabilitation and care needs.
This role involves:
 - Assessing need for care, case management and rehabilitation
 - Risk management
 - Designing, developing and monitoring multi-disciplinary care packages
 - Supervising and training support workers
 - Facilitating and managing liaison and coordination between services, including statutory and independent sector services

Previous Employment

- Oxfordshire County Council*
Care Manager *April 2001 – present*
Working with the physical disability team, responsible for carrying out assessments and setting up care packages for clients in North Oxfordshire,

which includes developing good relationships in health, employment, housing and education. Responsible for most of the clients with acquired brain injury.

2. *Partnerships in Care – Grafton Manor*
Shift coordinator/ Rehab technician 1995 – April 2001
Part of a large multi-disciplinary team, in a residential rehabilitation unit for people who have an acquired brain injury. Dealt with challenging behaviour, by writing and implementing behavioural programmes as well as carrying out risk assessments.

3. *Cosgrove Pool Cafeteria – North Buckinghamshire*
Manageress 1990 – 1995
Responsible for interviewing, recruiting and inducting new staff, as well as dealing with customer complaints.

4. *AP Engineering*
Personal Assistant 1987 – 1990

PROFESSIONAL MEMBERSHIP

GSCC General Social Care Council

BABICM British Association of Brain Injury Case Managers